

Zirkonzahn®

Human Zirconium Technology

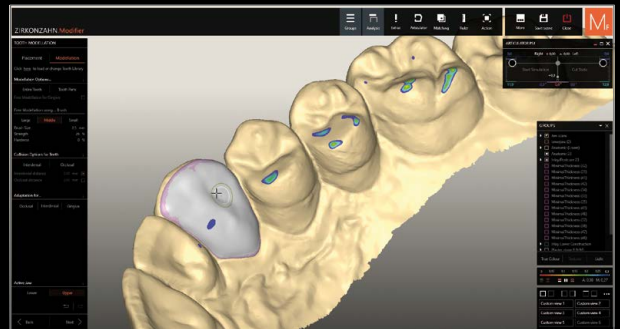


PRETTAU® 3 DISPERSIVE®

The Zirkonzahn Culture

COMPLETE RESTORATION OF UPPER AND LOWER JAW IN PRETTAU® 3 DISPERSIVE®

- Initial situation:* *Highly abraded tooth structure in the anterior region and reduced vertical dimension*
- Available data:* *2D photos, 3D face scans, intraoral scans*
- Workflow:*
- 3D patient digitisation with the Face Hunter 3D facial scanner
 - Virtual articulation in the Zirkonzahn.Modifier software using the PlaneFinder®
 - In the Zirkonzahn.Modifier software: digital tooth set-up and individualisation of the DEMI tooth set from the Heroes Collection virtual library
 - Design and milling of upper and lower mock-ups in Multistratum® Flexible resin
 - Try-in of the mock-ups in the patient's mouth to check phonetical, functional, and aesthetic aspects; execution of minor adjustments for an efficient final restoration
 - In the Zirkonzahn.Modifier software, design of 27 single crowns in radiopaque Exmon® Basic X-Ray resin; insertion in the patient's mouth and fit check via X-ray
 - Production of the single and partial crowns as well as of a palatal veneer in Prettau® 3 Dispersive® zirconia (tooth colour A1); sintering in the Zirkonofen 600/V4
 - Characterisation with ICE Stains 3D by Enrico Steger and minimal layering with Fresco Enamel Fluo
 - Cementation of the restorations in the patient's mouth and subsequent fine polishing



100% MONOLITHIC DESIGN, ONLY MINIMAL AESTHETIC LAYERING

Dr. med. dent. Clara Zanini – South Tyrol, Italy

MDT Alexander Lichtmannegger – Zirkonzahn Education Center Brunico, South Tyrol, Italy





NEW! PRETTAU® 3 DISPERSIVE®

- The material is already provided with colour, translucency and flexural strength gradients during the manufacturing process
- **Gradual-Triplex-Technology:** triple gradient with natural colouring as well as increasing flexural strength and translucency values
- For reduced or monolithic single crowns, inlays, onlays, veneers and bar-supported multi-unit bridges (especially suitable for monolithic design)
- No ceramic chipping (thanks to monolithic design), and no abrasion of the antagonist
- Restorations can be characterised individually for each patient with Colour Liquids Prettau® Aquarell Intensive, ICE Ceramics, Fresco Ceramics, ICE Stains Prettau® and ICE Stains 3D by Enrico Steger



HUMAN ZIRCONIUM TECHNOLOGY

Zirkonzahn Worldwide – Tel +39 0474 066 680 – info@zirkonzahn.com – www.zirkonzahn.com

NEW! 1 ORBIT – 4 DIAMETERS (95, 98, 106 AND 125 mm)

FOR THE M2 MILLING UNIT COMFORT LINE, THE M4 WET HEAVY METAL MILLING UNIT AND THE NEW M6 TELESKOPER BLANK CHANGER MILLING UNIT



VIDEO
M2 MILLING
UNIT COMFORT
LINE

