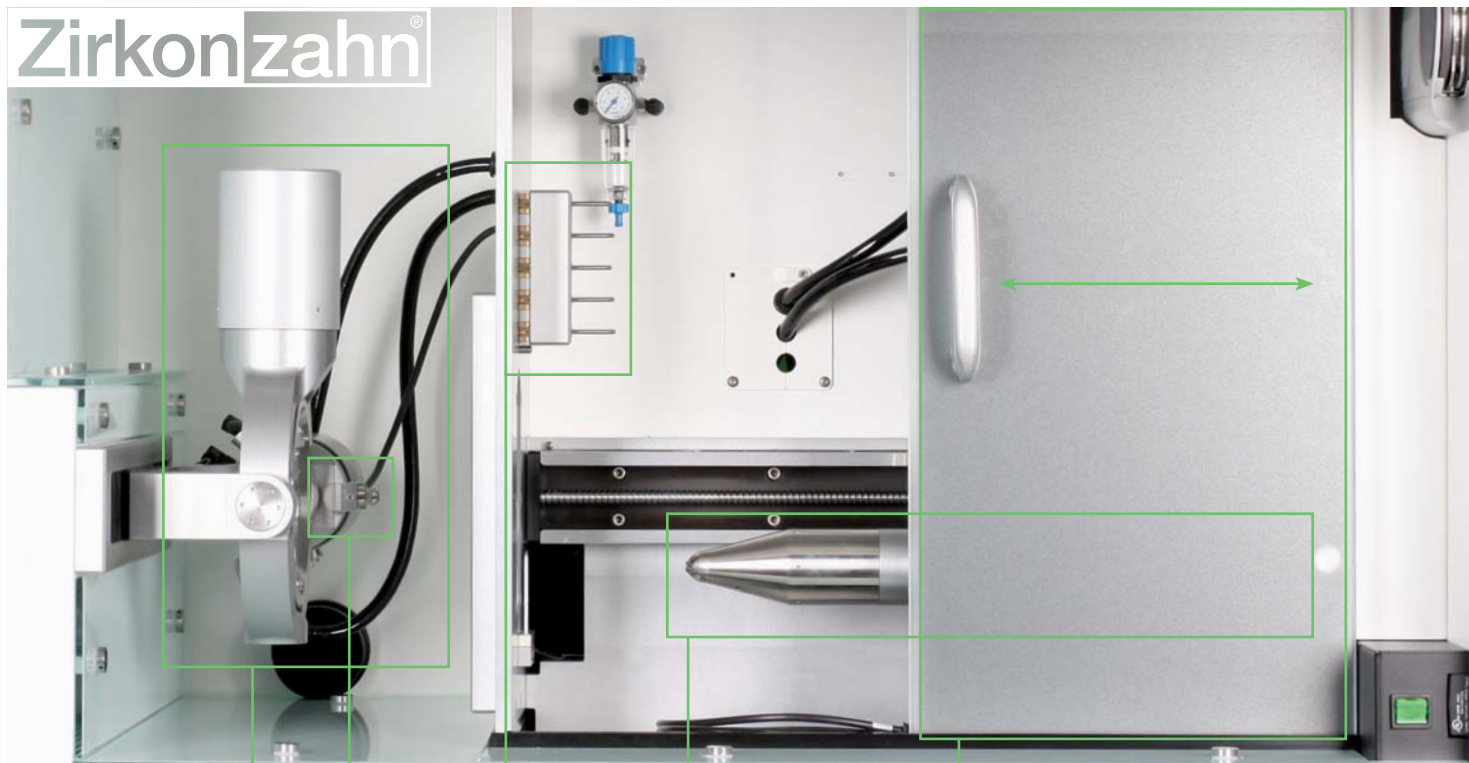


Zirkonzahn®

Human Zirconium Technology



MILLING UNIT M3 UPGRADE



(A)

(C)

(D)

(B)

(E)

Our new, upgradable milling unit M3:

- Constructed to grant access to the CAD/CAM world at a reasonable price
- Retroactively upgrade from 3+1 to 4+1 or 5+1 always possible (A)
(See explanation on the right page)
- One milling handpiece with 1mm milling bur for the whole milling process (B)
- Milling bur calibration with a precision up to 0,001 mm (C)
- Possible upgrade with a milling bur with automatic tool-changing (D)
- Sliding door as protection from dust (E)
- Easy to clean, glass interior
- Modular construction, typical for Zirkonzahn for upgrading and amplifying the system according to individual necessities
- Production capacity per day: approx. 100 units
- Milling materials: pre-sintered zirconium dioxide (ICE Zirkon Translucent, Prettau Zirconia), pre-sintered alumina, resin, wax

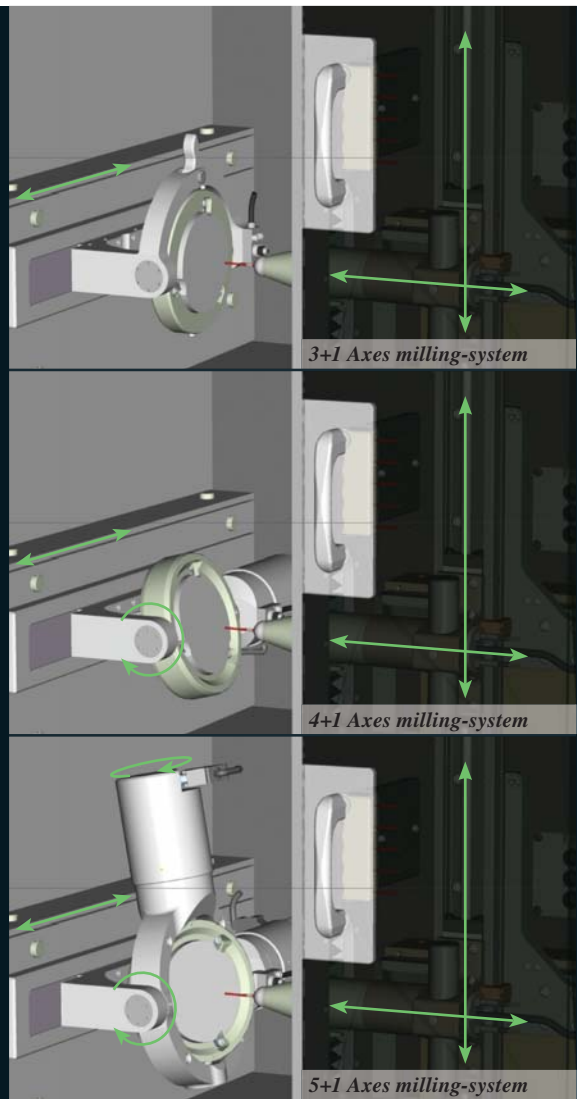
System limits:

- No upgrade with milling bur for other materials possible
- No multitasking



Automatic tool changer

Width	102 cm
Overall height	69 cm
Depth	52,9 cm
Weight	ca. 162 kg
Glass lining	Hardened Sicurit glass UNI ISO 12150
Processing axes	3+1 / 4+1 / 5+1
Power capacity	600 W
Operating voltage	230 V (115 V)
Power input	2,6 A (5,5 A)
Chuck	Ø 3 mm
Spindle speed	Standard version: max. 45.000 U/min
Spindle motor	100 W
Block diameter	Ø 95 mm



*Upgradable
up to 5+1 axes*



Zirkonzahn®

MILLING UNIT M3 UPGRADE

System components:

- Computer controlled upgradable milling unit M3
- Software package consisting of:
Archive software, modeling software, nesting software,
CAM software and milling software
- Personal computer with 16:10 widescreen display

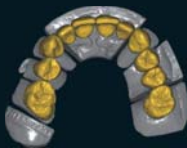


Zirkonzahn® .Modellier - ADDITIONAL MODULES



Inlay/Onlay

Module for Inlays/Onlays and Veneers



Prettau (fully anatomic)

Module for full-anatomical designs
(incl. reduction option)



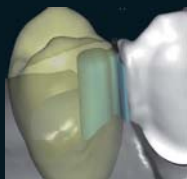
Telescopic Crowns

Module for primary telescopic crowns



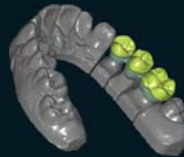
Occlusally Screwed Bridges

Module for occlusally screwed bridges
and crowns



Attachment

Module for prefabricated attachments



Overpress crowns and bridges

Module for 'press over' crown & bridgework



Wax-up/Situ/Mirror imaging

Module for working with diagnostic wax-ups, situ-scans (Double Scan) and mirror imaging opposing arch scans with reference to scanned master model



Bar

Module for custom bars



Abutments

Module for abutments



Virtual articulator

Module for articulated functional joint
movements

ZIRKONZAHN World Wide - Tel +39 0474 066 680 - info@zirkonzahn.com - www.zirkonzahn.com



WEAA5430=

Specifications and delivery subject to change without notice