

Zirkonzahn[®]

Human Zirconium Technology

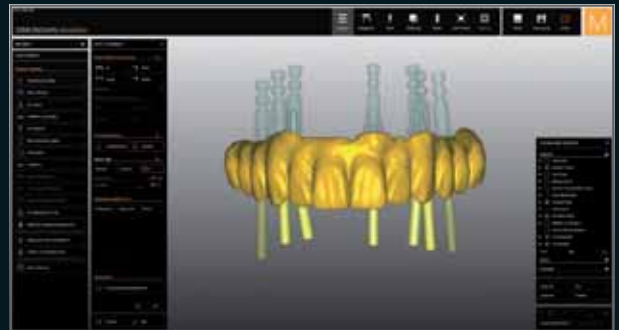


PRETTAU[®] 2 DISPERSIVE[®]

The Zirkonzahn culture

PRETTAU® BRIDGE MADE OF PRETTAU® 2 DISPERSIVE® ON ANODISED TITANIUM BASES

The teeth of the patient, who had been wearing dysfunctional dentures for 40 years, were extremely caried in the upper jaw and had to be extracted. The patient requested an aesthetic, functional and partly removable maxillary restoration. For this purpose, the patient situation was digitally captured with the Face Hunter 3D facial scanner, with the PlaneSystem® and with intraoral scans and transferred into the Zirkonzahn Software in the correct position without losing any information. On the basis of the obtained data, the occlusal plane could be redefined. Other reference points such as the midline and the bipupillary line were taken into account for a first aesthetic tooth set-up. After slightly modifying the set-up digitally and modelling the gingival areas, individual occlusion patterns could be designed in the virtual articulator. To check the virtual planning in the patient's mouth, a therapeutic prototype was manufactured out of Multistratum® Flexible. After a longer wearing period, situation scans provided the basis for the final restoration. The already planned virtual structure was adapted regarding the occlusion pattern and span, then milled in the M2 Dual Wet Heavy Metal milling unit out of Prettau® 2 Dispersive® zirconia. The zirconia material is characterised by very good flexural strength and translucency and is already provided with a natural colour shading. The light manual accentuation with Colour Liquid Prettau® intensive colours and the staining with ICE Zirkon 3D Stains by Enrico Steger provided a very aesthetic and patient-specific shade result. Before inserting into the patient's mouth, the anodised titanium bases were bonded into the zirconia structure. The Prettau® Bridge made of Prettau® 2 Dispersive® zirconia was finally screwed into the patient's mouth and the screw channels were sealed with specially milled resin sealing screws. For this purpose, the screw channels were designed with threads during the milling process.



DIGITALLY CREATED, MONOLITHICALLY DESIGNED

*MDT Marco Heidel – Zirkonzahn Education Center Brunico, South Tyrol, Italy
Dr. Holger P. Meiser, DDS, Holger Dental Group, Minnetonka, MN, USA*



NEW! PRETTAU® 2 DISPERSIVE®

- Pre-coloured zirconia with a natural colour gradient, optimal flexural strength and particularly high translucency
- No limitations! Ideal for monolithic full arch bridges, but also for single crowns, inlays, onlays, veneers, bars and multi-unit bridges (reduced or monolithic)
- No ceramic chipping (thanks to monolithic design), no abrasion of the antagonist
- Can be characterised individually for each patient with Colour Liquid Prettau® Aquarell intensive colours, ICE Zirkon Ceramics and ICE Zirkon 3D Stains by Enrico Steger



HUMAN ZIRCONIUM TECHNOLOGY

Zirkonzahn Worldwide – Tel +39 0474 066 680 – info@zirkonzahn.com – www.zirkonzahn.com

NEW! M2 DUAL WET HEAVY METAL MILLING UNIT

FLEXIBLY CONFIGURABLE
TWO-CHAMBER MILLING UNIT FOR
WET AND DRY PROCESSING WITHOUT
IN-BETWEEN CLEANING



ONE MACHINE,
TWO MILLING CHAMBERS



WEAB2674EN=