

Zirkonzahn®

Human Zirconium Technology



PRETTAU® SKIN®

THE ZIRKONZAHN CULTURE

PRETTAU® SKIN®: ANTERIOR RESTORATIONS IN PRETTAU® 4 ANTERIOR® DISPERSIVE®

Available data:

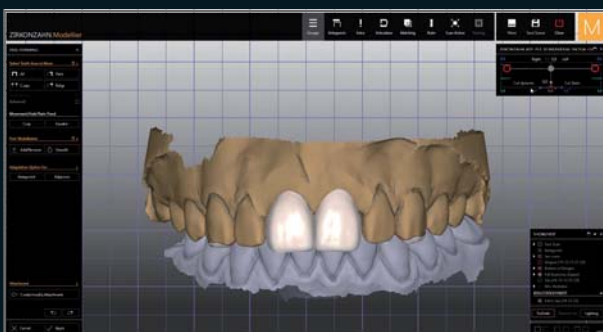
Photos, 3D facial scans, X-ray data, digital master models

Planned restoration:

Two, monolithic zirconia veneers (Prettau® Skin®) for restoring tooth 21, which was damaged, and for the aesthetic adjustment of tooth 11

Realisation:

- *Removal of the non-prep veneer in lithium disilicate from tooth 21*
- *Tooth shade determination with Zirkonzahn Shade Guide in Prettau® 4 Anterior® Dispersive® zirconia*
- *Virtual model articulation according to MDT Udo Plaster's approach (PlaneSystem®)*
- *Tooth set-up in the Zirkonzahn.Modifier software and individualisation of DEMI tooth set from the Heroes Collection virtual library*
- *Determination of the optimal insertion direction for realising a block-out model for mock-up milling*
- *Nesting of the mock-up in a Temp Premium Flexible resin blank and milling in the M2 Dual Teleskoper*
- *Try-in in the patient's mouth and assessment of function, phonetics and aesthetics aspects*
- *Minimally invasive preparation of tooth 21*
- *Design and milling of the ultra-thin zirconia veneers (approx. 0.2 mm)*
- *Sintering and characterisation with the ICE Stains 3D by Enrico Steger*
- *Adhesive cementation of Prettau® Skin® in the patient's mouth*





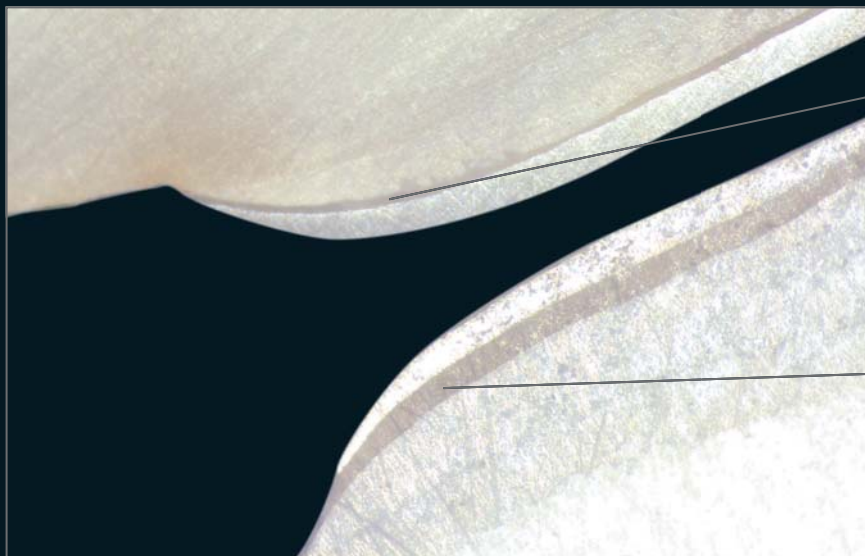
100% MONOLITHIC DESIGN, HIGHLY TRANSLUCENT ZIRCONIA

Dr. Francisco García Torres – Mexico

DT Alexander Lichtmannegger – Zirkonzahn Education Center Brunico, South Tyrol, Italy

In comparison: cross-sectioned natural tooth showing optimal (top) vs. non-optimal (bottom) cementation of a zirconia veneer.

Estecem II on Prettau® 4 Anterior® Dispersive® zirconia





PRETTAU® 4 ANTERIOR® DISPERSIVE®

- Highly translucent zirconia with natural colour gradient; the colour is evenly distributed for a dispersive effect
- For the manufacture of single crowns, inlays, onlays, veneers as well as 3-unit bridges (monolithic or reduced structures for layering with ceramics)
- Particularly suitable for the anterior region, but it can also be used in the posterior region
- No ceramic chipping (thanks to monolithic design); no abrasion of the antagonist
- Can be characterised individually for each patient with Colour Liquid Prettau® 4 Anterior® Aquarell Intensive, ICE Ceramics, Fresco Ceramics, ICE Stains Prettau® and ICE Stains 3D by Enrico Steger



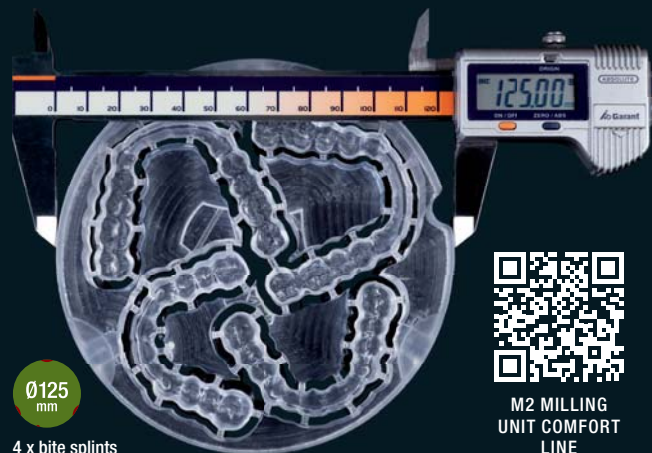
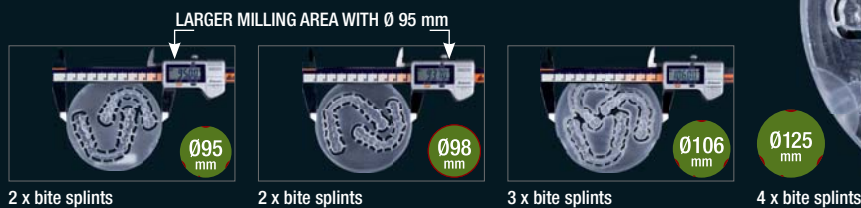
HUMAN ZIRCONIUM TECHNOLOGY

Zirkonzahn Worldwide – Tel +39 0474 066 680 – info@zirkonzahn.com – www.zirkonzahn.com

NEW! 1 ORBIT – 4 DIAMETERS

125, 106, 98 AND 95 mm

M2 MILLING UNIT COMFORT LINE WITH EXTRA-LARGE TELESKOPER ORBIT.
FULLY AUTOMATIC, FLEXIBLE, VIBRATION-FREE



WEAB2692EN=