

**Zirkonzahn<sup>®</sup>**

*Human Zirconium Technology*



## **DOUBLE SCREW BAR**

*The Zirkonzahn Culture*

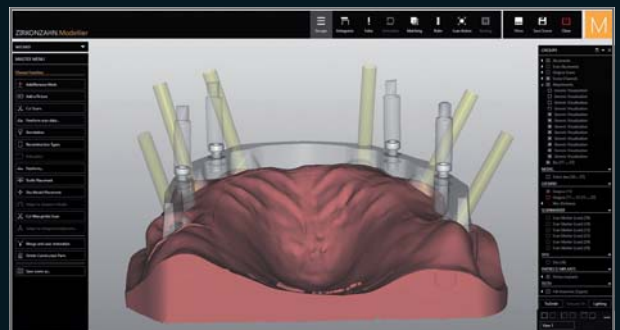
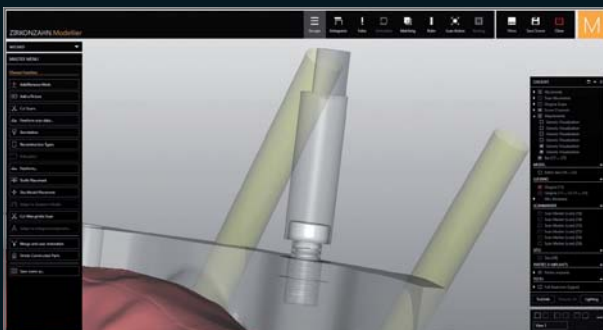
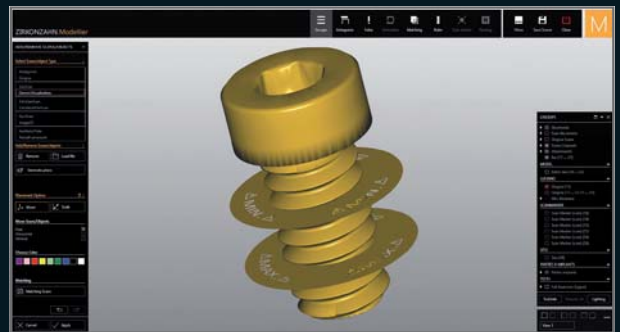
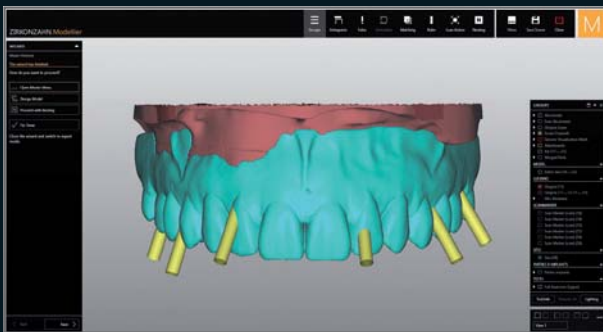
## DOUBLE SCREW METAL TECHNIQUE

### PRODUCTION OF FULL-ARCH PROSTHETICS ON DIVERGENT IMPLANTS

*The production of full-arch prosthetics on divergent implants is one of the most challenging restorations for a techno-clinical team. In the current case, a patient presented with complete maxillary edentulism and six implants already placed in the upper jaw. The virtual tooth set-up revealed a strong divergence of the implants towards the vestibular area. To strike a balance between function, stability and aesthetics in the final restoration, a hybrid restoration was produced using the Double Screw Metal technique.*

*The planned restoration consisted of a titanium bar and a secondary framework made of Denture Gingiva Basic resin with 14 individual resin crowns made of Abro® Basic. The design of the primary structure incorporated an innovative CAD/CAM workflow, in which four additional screws were integrated to screw the superstructure to the bar. The virtual position of the screws was visualised using the new Double Screw Metal function of the Zirkonzahn.Modellier software (Attachment module), which allows the generation of virtual screw threads within the bar design. The 3D rendering also provides the optimal position of the screw channel in the primary structure, as well as the ideal fit of the screw head in the superstructure.*

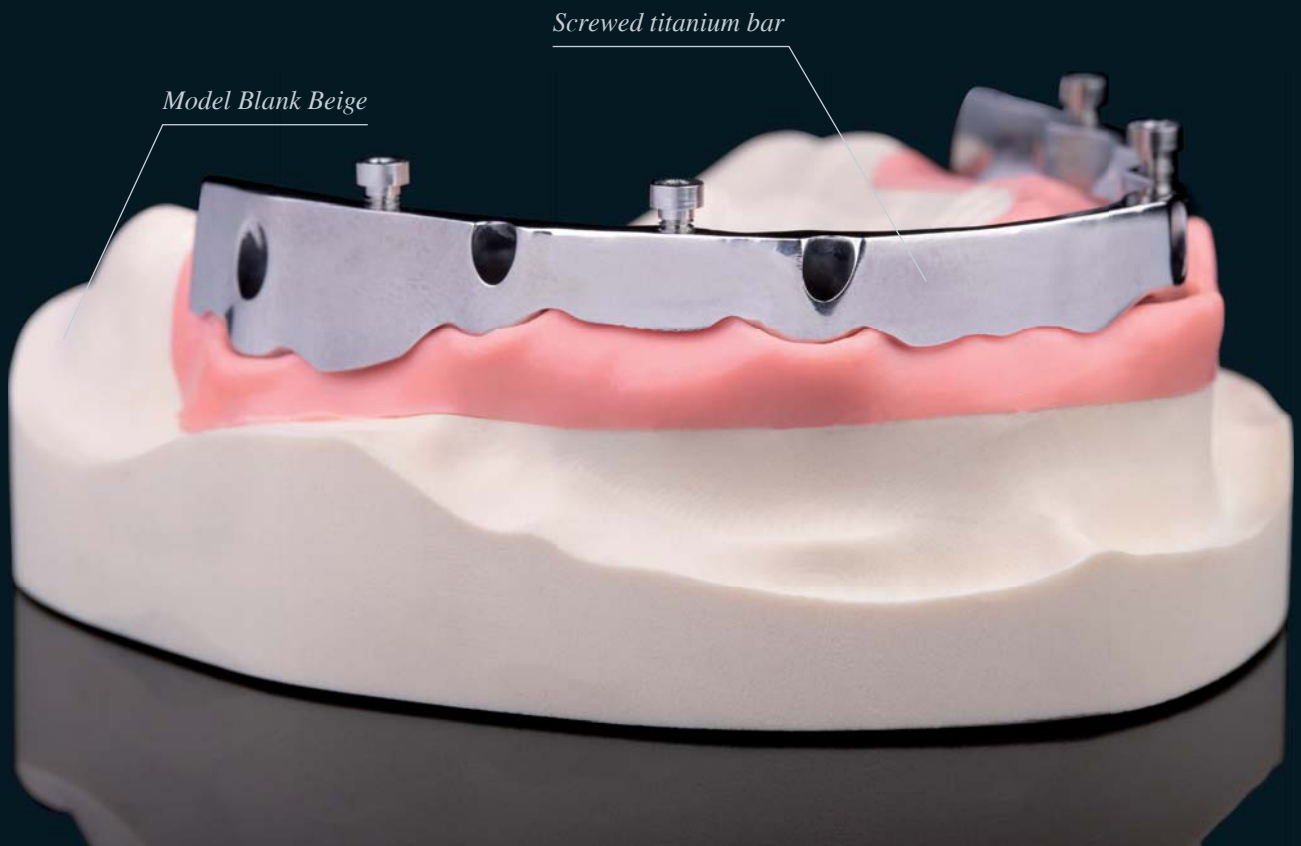
*The titanium bar is then screwed to the implants and the secondary structure to the bar. The integration of the Double Screw Metal technique not only avoids unaesthetic vestibular channels, but also improves post-operative maintenance and hygiene. With the Double Screw Metal technique it is thus possible to produce highly stable, bar-supported rehabilitations even in complex cases without compromising the full arch aesthetics.*

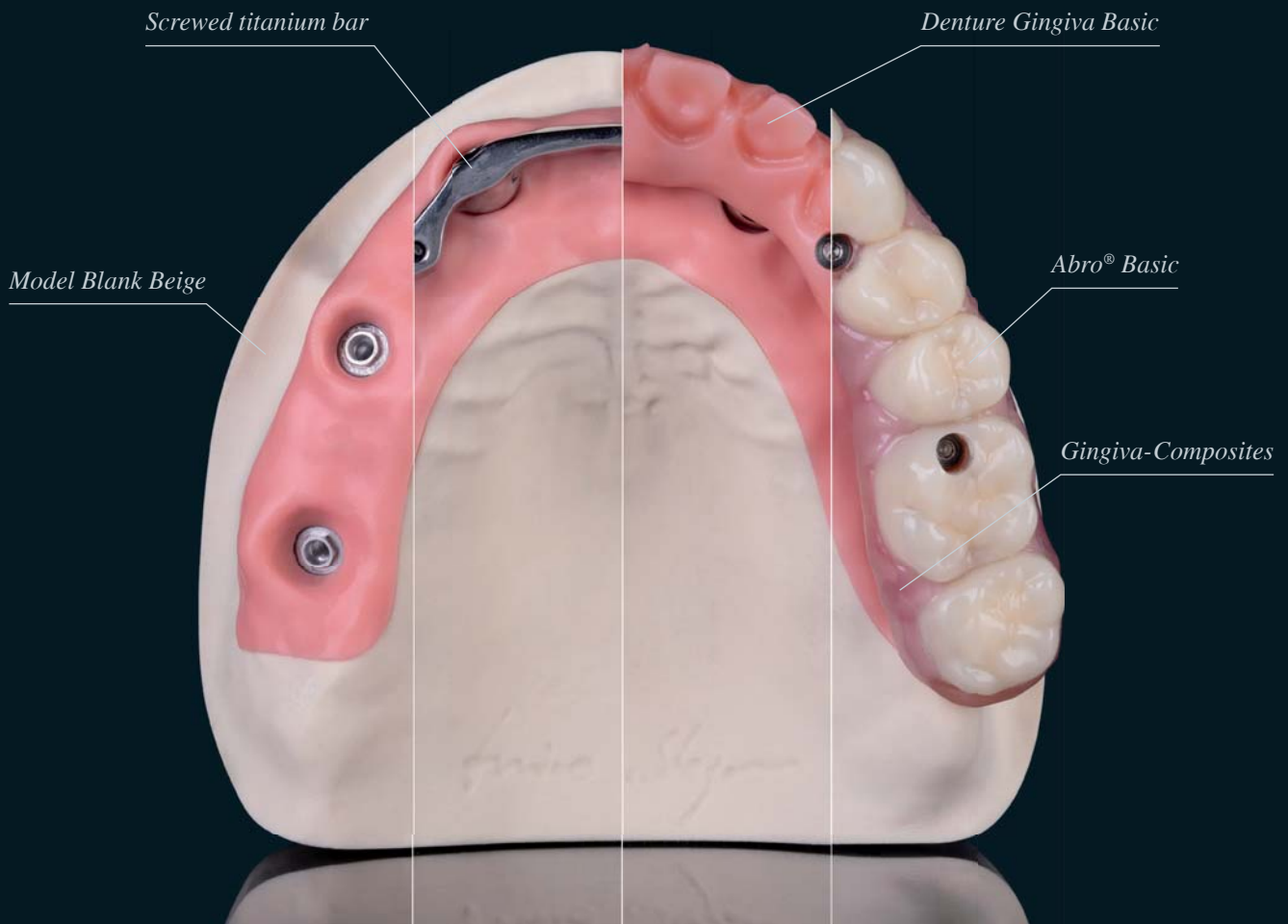


# INTELLIGENT SOLUTIONS

WITH ZIRKONZAHN DIGITAL WORKFLOW

*DT Sergio Polisi – Zirkonzahn Education Center Brunico, South Tyrol, Italy*





## HUMAN ZIRCONIUM TECHNOLOGY

*Zirkonzahn Worldwide – Tel +39 0474 066 680 – info@zirkonzahn.com – www.zirkonzahn.com*



M2 MILLING UNIT  
COMFORT LINE

