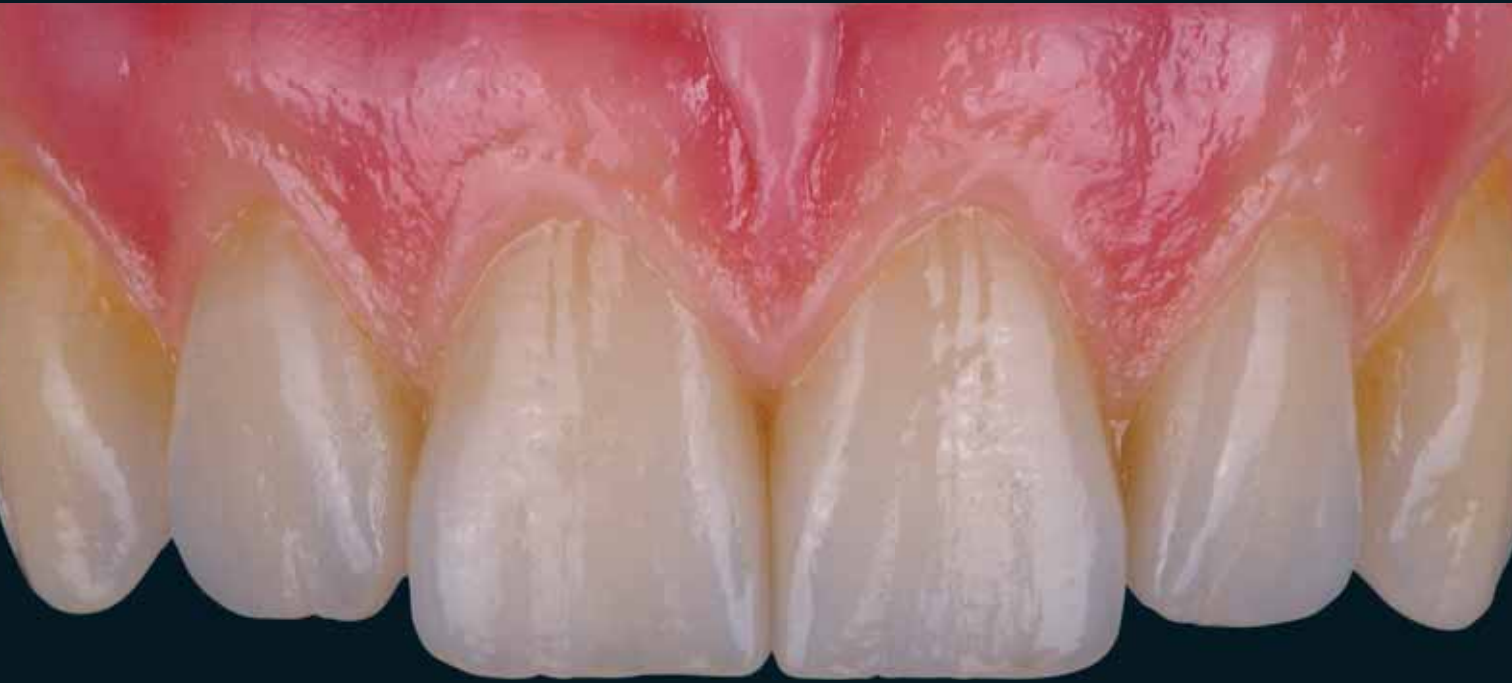


Zirkonzahn[®]

Human Zirconium Technology



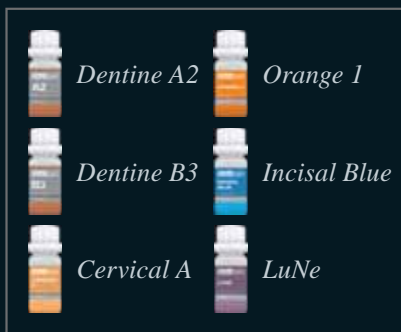
PRETTAU[®] 2 DISPERSIVE[®] ZIRCONIA

Hand-crafted according to the Zirkonzahn Culture

PRETTAU® 2 DISPERSIVE® – INDIVIDUALLY COLOURED AND VENEERED IN THE GINGIVAL AREA

NO LIMITATIONS – MILLED MONOLITHIC; HAND CRAFTED

DT Federico Presicci, Dental Laboratory Antonio Lazetera, Savona, Italy



The pre-coloured Prettau® 2 Dispersive® structure is further individualised through manual infiltration with Colour Liquid Prettau® 2 Aquarell A2, B3 and intensive colours. With a built-in shade gradient, colour infiltration only enhances the natural aesthetics.



The tooth aspect of the sintered structure is accentuated with ICE 3D Stains by Enrico Steger.



Roots and base gingiva are designed with a wash bake with ICE Ceramics Dentine Yellow, Transpa Neutral and Tissue 6.



The gingiva is further elaborated with various tissue masses and Transpa 3. Shades effects are thus incorporated.



The gingiva form is now shaped with Tissue 2, 3 and 6.



The shape is finalised with a correction bake and glaze.



Hand-crafted Prettau® 2 Dispersive® structure, veneered in the gingival area.

NEW! PRETTAU® 2 DISPERSIVE®

- *Pre-coloured zirconia with a natural colour gradient, optimal flexural strength and particularly high translucency*
- *No limitations! Ideal for monolithic full arch bridges, but also for single crowns, inlays, onlays, veneers, bars and multi-unit bridges (reduced or monolithic)*
- *No ceramic chipping (thanks to monolithic design), no abrasion of the antagonist*
- *Can be characterised individually for each patient with Colour Liquid Prettau® 2 Aquarell intensive colours, ICE Ceramics and ICE 3D Stains by Enrico Steger*



HUMAN ZIRCONIUM TECHNOLOGY

Zirkonzahn Worldwide – Tel +39 0474 066 680 – info@zirkonzahn.com – www.zirkonzahn.com

NEW!

M2 DUAL WET HEAVY METAL MILLING UNIT

**ONE MACHINE,
TWO MILLING CHAMBERS**

**FOR SEQUENTIAL WET AND
DRY PROCESSING WITHOUT
IN-BETWEEN CLEANING**



WET

DRY



WEAB3537EN=