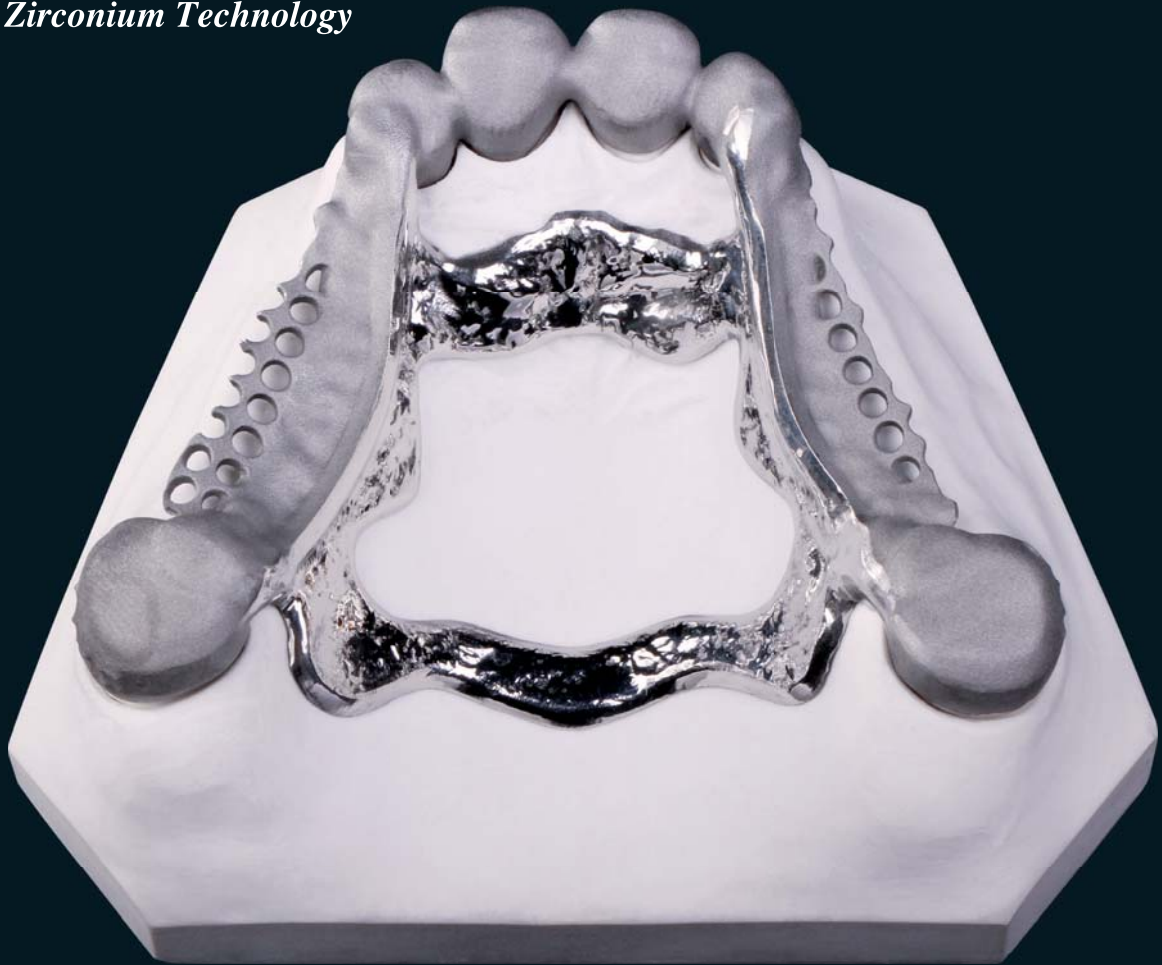


Zirkonzahn[®]

Human Zirconium Technology



FORGE YOUR MASTERPIECES

with our metals

We offer a wide range of materials and technologies that enable the production of dental jobs from the initial situation to the final restoration. We constantly develop new solutions to help our customers improve and aim at perfection. Therefore, we never surrender control of our products to others.



NEW! M2 DUAL WET HEAVY METAL MILLING UNIT

- *Two-chamber milling unit with 5+1 axes simultaneous milling technology*
- *Separate milling chambers enable sequential wet and dry processing of the materials without in-between cleaning*
- *For processing all materials and all kinds of restorations (zirconia, resin, wax, Sintermetall, cobalt-chrome, titanium, Raw-Abutments® prefabricated titanium abutment blanks, glass ceramics and composite)*
- *Stand-alone solution: can be controlled via integrated PC with touchscreen directly on the milling unit, elaboration tools can be loaded and milling processes or calibration processes can be started*
- *High-performance milling spindle with optimised cooling water supply for particularly gentle material elaboration*
- *CAD/CAM milling bur 6 mm and orbit with opposed rotary axes (A and B) for a stable elaboration process*
- *Perfect tool organisation thanks to contamination-protected tool chamber with automatic tool changer function and 21 slots for the storage and organisation of used and new tools, additional tool holders can be added (optional)*
- *Optical tool detection: the optical identification of elaboration tools ensures that the right tools are selected for each milling operation. Milling errors caused by incorrect tool selection are thus eliminated*
- *Spaciously designed, optimally illuminated and easily accessible and visible processing areas*
- *Automatic self-cleaning function*
- *During the elaboration of resins, the Ioniser (optional) ensures a clean milling unit by discharging the plastic shavings. This results in more cleanliness during the milling process*
- *Blank Repositioner clamping ring (optional) for the removal, the verification of the fit and the reclamping of material blanks with milled structures at the same position in the orbit, e.g. for their post-processing*

OUR METALS



SINTERMETALL

Our sinter metal (cobalt-chrome alloy), 100% deformation-resistant, with no distortions or stresses in the metal structure when sintered, is the right material for the realisation of single crowns, bridges up to 14 units, metal frameworks, telescopes, bars, attachments as well as post and cores. The structures can be galvanised optionally with the Metal Colourizer.



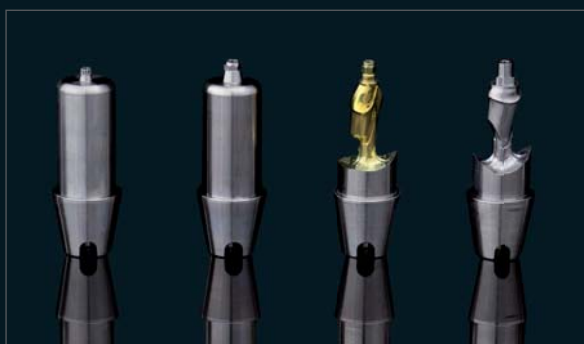
CHROM-COBALT

Our cobalt-chrome, at the same time hard and elastic, is particularly suited for delicate structures, metal framework which can be veneered with ceramics, dental restorations with friction elements or telescopic partial dentures. The slightly softer Chrom-Cobalt Soft is recommended for restorations with friction elements.



TITAN 5

Our Titan 5 (titanium alloy Ti-6Al-4V ELI according to ASTM F136; DIN EN ISO 5832-3), extremely health-friendly and corrosion-resistant, is particularly suited for the manufacture of reduced or fully anatomic metal frameworks for veneering with ceramics as well as for bar constructions. The titanium structures can be anodised in different colours.



RAW-ABUTMENT®

Our Raw-Abutments® are made of titanium. They enable the manufacture of customised one-piece abutments thanks to their industrially prefabricated implant-connections, which guarantee the highest precision and fitting accuracy. Special milling strategies and milling burs ensure a particularly smooth surface structure.

SINTEROFEN 300S

SINTERING FURNACE FOR SINTERMETALL



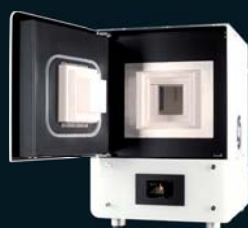
- High vacuum pump for oxygen-free sintering
- Sintering without shielding gas and residual oxides
- Large combustion chamber for around 50 sinter metal elements
- With the special Sintering Holder XL 300S it is possible to sinter two full arch bridges or six bars in just one sintering cycle
- Automatically controlled cooling
- Modern high quality full glazing
- 4,3" colour touchscreen control panel which shows the sintering process and remaining time
- USB port for updates
- Low maintenance, very robust

HUMAN ZIRCONIUM TECHNOLOGY

Zirkonzahn Worldwide – T +39 0474 066 680 – info@zirkonzahn.com – www.zirkonzahn.com

ZIRKONOFEN 700 ULTRA-VAKUUM

SINTERING FURNACE FOR ZIRCONIA AND SINTER METAL



Zirkonofen 700 Ultra-Vakuum sintering furnace

+



Sinter Metal Furnace Adapter

=



Zirkonofen 700 Ultra-Vakuum with Sinter Metal Furnace Adapter



WEAB3510EN=