



PLANESYSTEM® AND ARTICULATORS

COMPONENTS FOR PATIENT DIGITISATION



PLANEFINDER®



PlaneFinder®

Device used to acquire the maxillary position in the articulator by means of the Natural Head Position (NHP) and for the reconstruction of the occlusal planes.

Article number: SYAA0360



Bite Tray PlaneFinder® 1-3

Support for bite registration and transfer of the upper jaw situation into the PS1 articulator.

Article number: ZBAC2154



Bite Tray PlaneFinder® 2-4

Support for bite registration and transfer of the upper jaw situation into the PS1 articulator.

Article number: ZBAC2156



Spacers for Bite Tray PlaneFinder®

Accessories used in cases of edentulism, in combination with the Bite Trays 1-3 and 2-4.

Article number: ZBAC2158

PS1 ARTICULATOR



PS1 Articulator

Physical and virtual articulator designed with special geometries to simulate patient-specific rotating, sliding and closing jaw movements as they occur during mastication.

Article number: SYAA0350



Set JawAligner PS1 Inclined

Magnetic spacer plates available in two different heights and with an inclination of 5° for a plaster-free articulation of models in the PS1 articulator as well as GS1 plaster articulator.

Article number: ZBAC3561



Set JawAligner PS1 Straight

Magnetic spacer plates available in three different heights for a plaster-free articulation of models in the PS1 articulator as well as GS1 plaster articulator.

Article number: ZBAC3591



Set of inserts for the PS1 articulator

Inserts for adjusting surtrusion and detrusion movements at the articulator joint.

Article number: ZBAC1901



Custom Incisal Guidance Table PS1

Individual incisal guidance table for precise representation of the protrusive anterior guidance and the laterotrusive canine guidance on the PS1 articulator.

Article number: ZBAC1911



Zero Adjusting Pin PS1

For model articulation in zero position with the PS1 articulator.

Article number: ZBAC1941



Set Adjusting Key PS1

Set for the PS1 articulator consisting of Zero Adjusting Pin PS1 and Adjusting Key PS1. For achieving synchronisation between several PS1 articulators.

Article number: ZBAC1971

Calibration of articulators from other manufacturers

Articulator	Required accessories	
SAM 2P/2PX/3	Set Adjusting Key SAM Article number: ZBAC3621	Set JawAligner PS1 Adapter SAM Article number: ZBAC3622
Artex articulators of 126 mm height	Set Adjusting Key Artex Article number: ZBAC3611	
KaVo Protar evo 7 / evo 9	Set Adjusting Key KaVo Article number: ZBAC3631	Set JawAligner PS1 Adapter KaVo Article number: ZBAC3632

PLANEPOSITIONER®



PlanePositioner®

Platform for placing upper jaw models in the PS1 articulator or other articulators and to reproduce individual occlusal planes.

Article number: SYAA0370



Plaster Plates 5 mm

Plates used to set up the teeth on the PlanePositioner®.

Article number: ZBAC2351



Plaster Plates 5 mm splitted

Splitted plates used to set up teeth on the PlanePositioner®.

Article number: ZBAC2361



Calibration plate Plexi

For the centric alignment of the models in the PS1 articulator with PlanePositioner®, 2 mm.



Symmetry Measurement Plate

Symmetry measurement plate for easier centric alignment of the models in the PS1 articulator with the PlanePositioner®, 5 mm.



JawPositioner

With the PlanePositioner®, it allows the transfer of digitally articulated models into the laboratory articulator.

Article number: ZBAC3501 (46 pieces)



JawPositioner Support

Support used to fix the JawPositioner into the orbit of the Zirkonzahn milling unit.

Article number: ZBAC3511 (also available in Ø 125 mm)



Reference Transfer Plate

For the determination of the maxillary position within the PlanePositioner® and its subsequent referencing in the PlaneAnalyser and PlaneAnalyser II.

Article number: ZBAC1921



Jaw Transfer Plate

For the digital transfer of the maxillary position without face scans into the Zirkonzahn.Scan software in combination with the Multi Marker Plate.

Article number: ZBAC2431

MINI-ARTI ZS1 & GS1 PLASTER ARTICULATOR



Mini-Arti ZS1

Small articulator for checking the occlusion of small bridges and single crowns. Opening, closing, protrusion, retrusion and laterotrusion movements can also be simulated. For milled as well as printed models.

Article number: SYAA0380



Set JawAligner ZS1

Magnetic spacer plates in two different heights for a plaster-free articulation of models (printed or milled) in the Mini-Arti ZS1 articulator. Models compatible with the Set JawAligner PS1 Inclined.

Article number: ZBAC3571



GS1 Plaster Articulator

Articulator for plastering models and checking opening and closing movements, provided with an incisal pin with a fixed vertical height and a centric fixed by rigid hinges. Specially conceived to protect the PS1 articulator from plaster residues and water, can be synchronised with the PS1 through the Adjusting Key PS1. If desired, it can also be used in combination with the JawAligner without using plaster.

Article number: ZBAC3581

FACE HUNTER



Face Hunter

Scanner for photo-realistic 3D facial digitisations as working basis for the production of individualised dental prostheses.

Article number: SYAA0310



Flash for Face Hunter

Support with 2 flashes for the Face Hunter 3D facial scanner.

Article number: ZBAA4121



Tripod for Face Hunter

Support for the Face Hunter 3D facial scanner equipped with a shelf for the laptop. With adjustable height.

Article number: ZBAA4111



Set Transfer Fork Face Hunter

5 bite trays and 10 reference markers for matching jaw scan data with facial scans.

Article number: ZBAC2401



Reference markers Transfer Fork Face Hunter

10 reference markers for the recognition of the Transfer Fork Face Hunter's position.

Article number: ZBAC2421



Transfer Fork Reference Cover

Transfer Fork attachment as position reference for the intraoral scanner.

Article number: ZBAC2411



Multi Marker Plate

Positioning attachment for the Easy Fix model holder for scanning the Transfer Fork Face Hunter and the Jaw Transfer Plate in the Zirkonzahn scanner.

Article number: ZBAC1931

PLANEANALYSER II & HEAD TRACKER



PlaneAnalyser II

Analysis instrument for digital acquiring and recording the patient's specific lower jaw movements (as well as for the full adjustment of the laboratory articulator).

Article number: SYAA0440



Reference Plane Fork V2

Accessory for the transmission of the recorded NHP with the help of the PlaneFinder® into the PlaneAnalyser II system.



Reference Transfer Plate

For the determination of the maxillary position within the PlanePositioner® and its subsequent referencing in the PlaneAnalyser and PlaneAnalyser II.

Article number: ZBAC1921



Head Tracker

For a faster acquisition and transfer of the Natural Head Position (NHP) into the virtual articulator and creation of patient-specific 2D photos (with Zirkonzahn.App). Separate acquisition of the ala-tragus angle of both sides of the face with the help of the Ala Tragus Sensor Holder.

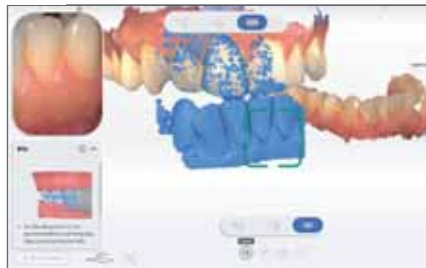
DETECTION EYE INTRAORAL SCANNER



OPTIMALLY INTEGRATED INTO ZIRKONZAHN'S DATA MANAGEMENT SYSTEM

The new Detection Eye intraoral scanner stands out for its high scanning speed, precise impression taking and low weight. The scanner is easy to use and the choice of two different tips makes the treatment more comfortable and patient-friendly.

- High scanning accuracy
- High scanning speed: jaw digitisation in less than 60 seconds
- Real-time scan with realistic colours and detailed preparation borders
- Powder-free scanning for a simplified process
- Lightweight, compact and ergonomic design
- Autoclavable and reusable tips in two different sizes



This is an international advertisement. Not all products mentioned are available in all countries. The product's field of application may vary depending on the country. Please contact your sales team for more information. All information is subject to change. Errors and omissions excepted. Version: 02/03/2023

